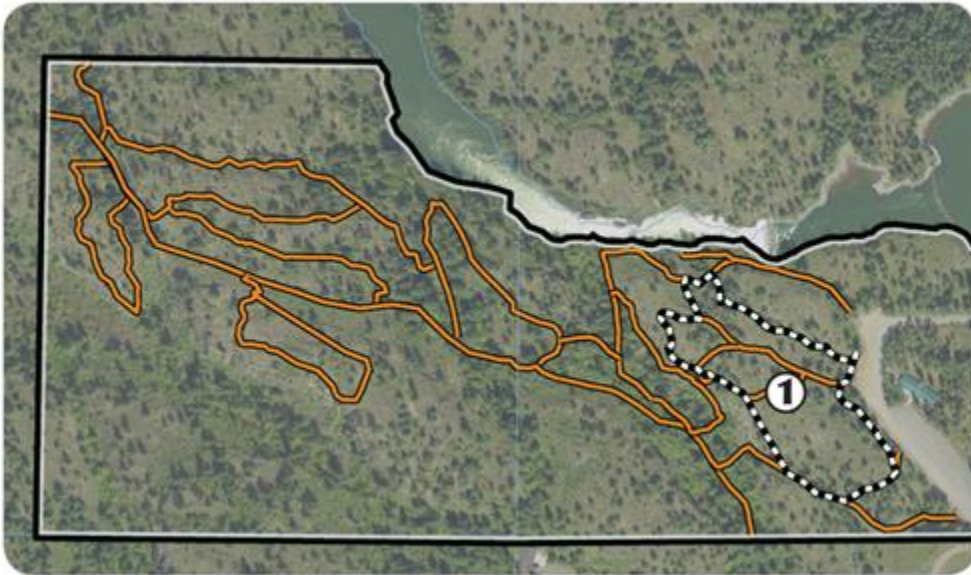


Q'emiln Park



Loop **1** Top Side Trail

Distance: 0.42 miles

Approximate Steps: 859

Trail Surface: Gravel/Dirt/Rock

Q'emiln (pronounced "ka-mee-lin") Park is located at the south end of the Spokane Street bridge. This 78.5 acre park features a guarded swimming beach, boat launch, BBQ pits, picnic shelters, horseshoe pits, sand volleyball courts, concession stand, restrooms, and a 40-acre trail system. There are two small covered shelters (the Gazebo & Picnic Shelter), a large covered Grand Pavilion 60'x120', an enclosed Trailhead Pavilion 32'x122", and grassy areas available for picnic reservations.

Highlighted in orange on the corresponding map are other trail segments worth exploring. NOTE: Some trail segments may require climbing and uneven walking surfaces. Q'emiln Park offers an ample supply of natural scenic hiking trails with a variety of distances for all ages. Scenic views of the Post Falls dam, rock cliffs with rock climbers, and an abundant and diverse range of wildlife, all can be experienced by visiting this trail system.