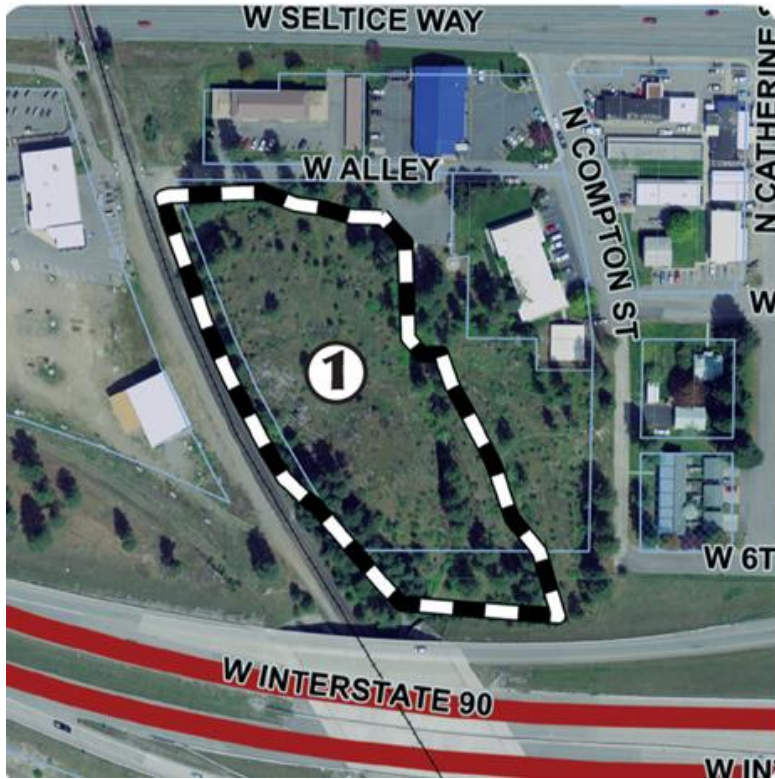


Treaty Rock Park



Loop ① Perimeter

Distance: 0.32 miles

Approximate Steps: 655

Trail Surface: Asphalt/Natural

Treaty Rock Park is the site of the legendary treaty between Chief Seltice of the Coeur d'Alene tribe and Fredrick Post, the town's founder, which is scribed into a rock. Although being in close proximity to I-90, this 3.8 acre park contains beautiful natural areas with gravel paths, native vegetation, and interesting rock outcroppings. A trail loops through the park, down a rock gorge and passes treaty rock on the way back to the parking lot.